

## PROGRAMS & SERVICES

### Community-Based Outreach & Advocacy Programs (CBOA)

O'ahu & Kaua'i - 808.589.1829 Ext. 200

### Emergency Shelters / Kamala Homes

O'ahu - 808.754.9844

### Guide On The Side (GOTS)

O'ahu - 808.265.0635

### Hale Lanipōlua Assessment Center (HLAC)

O'ahu - 808.266.7980

### Hāloa House

O'ahu - 808.589.1829 Ext. 233

### Ho'okala Attendant Care Program

O'ahu - 808.589.1829 Ext. 160

### Housing First

O'ahu - 808.589.1829 Ext. 200

### Independent Living Programs (ILP) / Imua Kākou (IK)

O'ahu - 808.589.1829 Ext. 233

### Independent Living Program Training Home (ILPTH)

O'ahu - 808.589.1829 Ext. 200

### Intensive In-Home Services (IIHS) /

### Intensive Independent Living Skills (IILS)

O'ahu - 808.589.1829 Ext. 400

Kaua'i - 808.589.1829 Ext. 200 • Hawai'i - 808.969.1935

### Ka'i Like Program

O'ahu - 808.589.1829 Ext. 200 • Hawai'i - 808.969.1935

### Kalihi Juvenile Assessment Center (KJAC)

O'ahu - 808.336.1573

### School Success Program (SSP)

Kaua'i - 808.589.1829 Ext. 200

### Step-Up Housing & Foster Youth to Independence (FYI)

O'ahu - 808.589.1829 Ext. 233

### Trafficking Victim Assistance Program (TVAP)

Hotline - 1.888.398.1188 (O'ahu, Kaua'i, Hawai'i)

### Transition & Aftercare Support Services (TASS)

O'ahu & Kaua'i - 808.589.1829 Ext. 200

Hawai'i & Maui - 808.969.1935

### Transitional Family Homes (TFH)

O'ahu - 808.589.1829 Ext. 400 • Hawai'i - 808.969.1935

### Transitional Living Program (TLP)

O'ahu - 808.589.1829 Ext. 200

### Wraparound Services

O'ahu - 808.589.1829 Ext. 200 • Hawai'i - 808.854.9032

### Youth Outreach (YO!)

O'ahu - 808.942.5858

## MISSION STATEMENT

*Hale Kipa provides opportunities and environments that strengthen and encourage youth, their families and communities to actualize their potential and social responsibility.*

Hale Kipa, or "House of Friendliness," is a multi-service, fully accredited 501(c)(3) nonprofit agency that specializes in working with youth and their families who often have nowhere else to turn. Hale Kipa has served more than 67,000 youth throughout Hawai'i since its beginning in 1970 as a single shelter on O'ahu.

This includes working in partnership with public agencies and private organizations to provide residential, outreach, and foster care services at no cost. With programs that are flexible and responsive to changing needs, Hale Kipa supports youth involved in juvenile justice, behavioral health, education and child welfare. Program goals include stabilizing young people in crisis and helping youth and families build resiliency to experience success in their lives. Services are flexible, free, creative, and determined by the youth's and family's needs.

All persons are treated equitably and without favoritism, subject to limitations imposed by contractual obligations.



## HALE KIPA

91-2128 Old Fort Weaver Road • 'Ewa Beach, HI 96706

T 808.589.1829 • F 808.589.2610

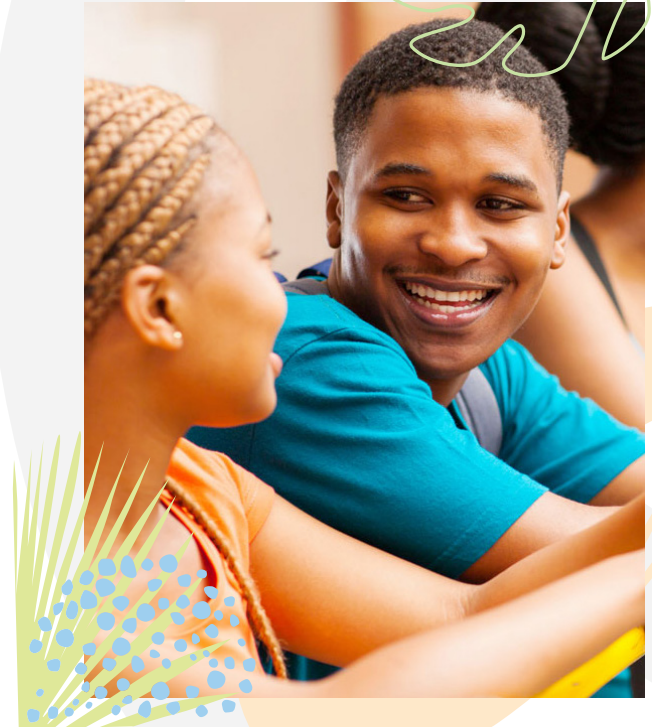
info@halekipa.org • www.halekipa.org



Aloha United Way  
Kauai United Way  
Hawaii Island United Way



## Intensive In-Home Services



## HALE KIPA

Inspiring Lives - One Youth At A Time

### Intensive In-Home Services

Hale Kipa's Intensive In-Home Program provides comprehensive, behavioral, community-based services for children and families known to the Child & Adolescent Mental Health Division (CAMHD) State of Hawaii, Department of Health.

The services are based on an intensive, individualized, strengths-based, trauma-informed care approach that focuses on the youth and family's needs and goals.

A dedicated, geographically-based team of mental health professionals and trained therapeutic paraprofessional staff are assigned to assist and support youth and their families to meet the identified goals of their Coordinated Service Plan (CSP) and reduce the need for unnecessary out-of-home therapeutic placements. Services are designed to be both culturally sensitive and developmentally fitting to the strengths and needs of youth and families.

### Population and Eligibility Criteria

- Youth ages 3 through 20 years of age and their families
- Can serve CAMHD youth in residential care as part of a transition plan

### Admission Criteria

- Referred by CAMHD Family Guidance Centers

### Youth and Family Responsibilities

- Participation in the development of an individualized Mental Health Treatment Plan with personal goals
- Participation in individualized therapeutic program activities

### Services

- Individual and family therapy and support towards independence
- Flexibility to meet with youth and families in a variety of home and community locations
- Intensity and frequency of service provision is based on identified needs and goals of youth / family
- Assist families in identifying and securing other services and resources as needed
- Strength-based assessments
- Mental Health Treatment Plans are developed based on the strengths and goals of the individual and family
- Assist families and youth to obtain relevant skills which leads toward transition to adulthood
- Family / team support meetings
- Linkages and collaboration with other community resources
- 24-hour staff accessibility / crisis planning and interventions

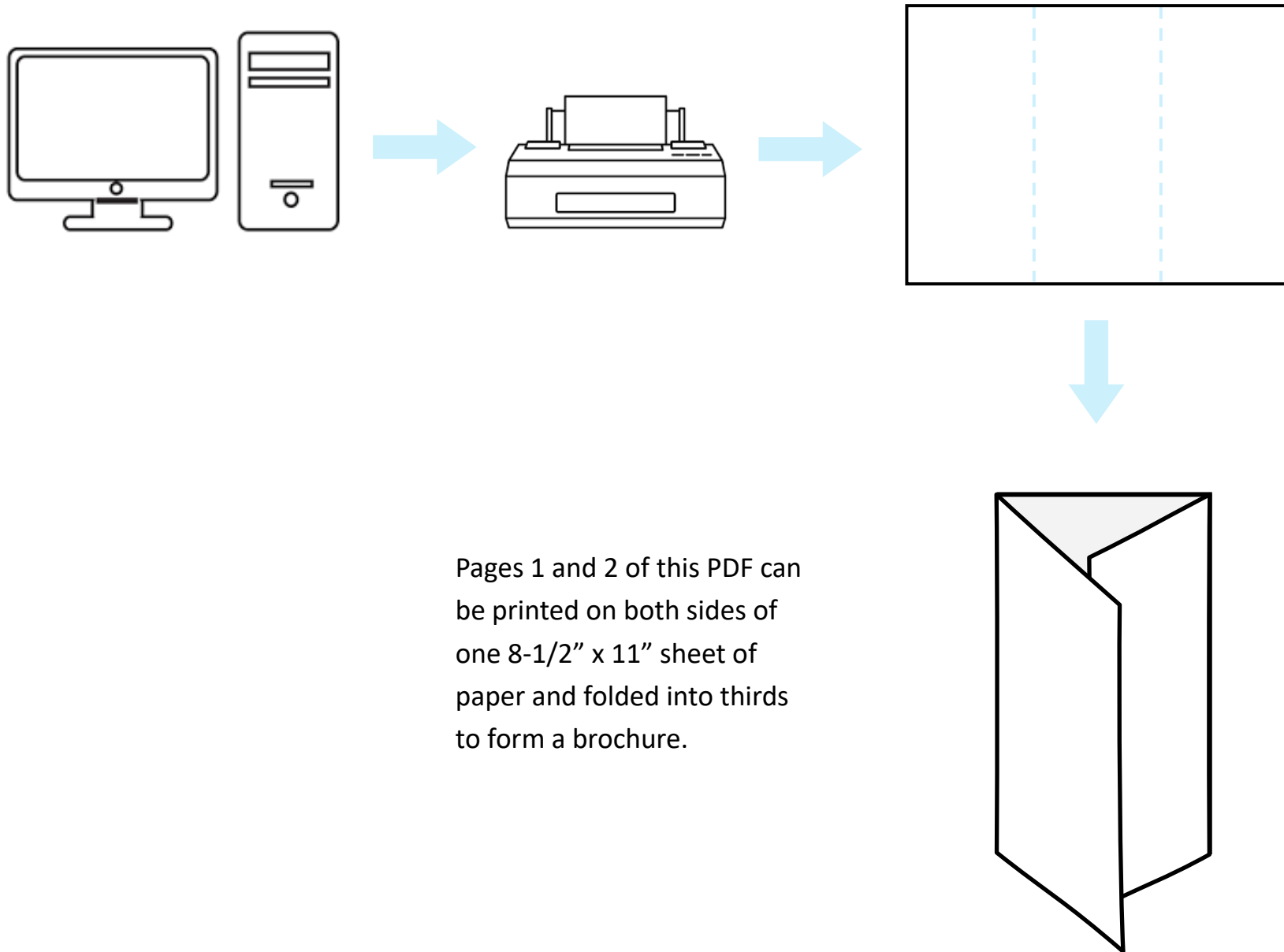
### Contact Information

O'ahu & Kaua'i - 808.589.1829 Ext. 200  
Hawai'i - 808.969.1935



*“Without Hale Kipa I wouldn't have my son back as a successful and happy young man.”*

*Hong Chen, Ph.D.*



Pages 1 and 2 of this PDF can be printed on both sides of one 8-1/2" x 11" sheet of paper and folded into thirds to form a brochure.