

PROGRAMS & SERVICES

Community-Based Outreach & Advocacy Programs (CBOA)

O'ahu & Kaua'i - 808.589.1829 Ext. 200

Emergency Shelters / Kamala Homes

O'ahu - 808.754.9844

Guide On The Side (GOTS)

O'ahu - 808.265.0635

Hale Lanipōlua Assessment Center (HLAC)

O'ahu - 808.266.7980

Hāloa House

O'ahu - 808.589.1829 Ext. 233

Ho'okala Attendant Care Program

O'ahu - 808.589.1829 Ext. 160

Housing First

O'ahu - 808.589.1829 Ext. 200

Independent Living Programs (ILP) / Imua Kākou (IK)

O'ahu - 808.589.1829 Ext. 233

Independent Living Program Training Home (ILPTH)

O'ahu - 808.589.1829 Ext. 200

Intensive In-Home Services (IIHS) /

Intensive Independent Living Skills (IILS)

O'ahu - 808.589.1829 Ext. 400

Kaua'i - 808.589.1829 Ext. 200 • Hawai'i - 808.969.1935

Ka'i Like Program

O'ahu - 808.589.1829 Ext. 200 • Hawai'i - 808.969.1935

Kalihi Juvenile Assessment Center (KJAC)

O'ahu - 808.336.1573

School Success Program (SSP)

Kaua'i - 808.589.1829 Ext. 200

Step-Up Housing & Foster Youth to Independence (FYI)

O'ahu - 808.589.1829 Ext. 233

Trafficking Victim Assistance Program (TVAP)

Hotline - 1.888.398.1188 (O'ahu, Kaua'i, Hawai'i)

Transition & Aftercare Support Services (TASS)

O'ahu & Kaua'i - 808.589.1829 Ext. 200

Hawai'i & Maui - 808.969.1935

Transitional Family Homes (TFH)

O'ahu - 808.589.1829 Ext. 400 • Hawai'i - 808.969.1935

Transitional Living Program (TLP)

O'ahu - 808.589.1829 Ext. 200

Wraparound Services

O'ahu - 808.589.1829 Ext. 200 • Hawai'i - 808.854.9032

Youth Outreach (YO!)

O'ahu - 808.942.5858

MISSION STATEMENT

Hale Kipa provides opportunities and environments that strengthen and encourage youth, their families and communities to actualize their potential and social responsibility.

Hale Kipa is a multi-service, fully accredited 501(c)(3) nonprofit agency that specializes in working with youth and their families who often have nowhere else to turn. Hale Kipa has served more than 67,000 youth throughout Hawai'i since its beginning in 1970 as a single shelter on O'ahu.

This includes working in partnership with public agencies and private organizations to provide residential, outreach, and foster care services at no cost. With programs that are flexible and responsive to changing needs, Hale Kipa supports youth involved in juvenile justice, behavioral health, education and child welfare. Program goals include stabilizing young people in crisis and helping youth and families build resiliency to experience success in their lives. Services are flexible, free, creative, and determined by the youth's and family's needs.

All persons are treated equitably and without favoritism, subject to limitations imposed by contractual obligations.



HALE KIPA

91-2128 Old Fort Weaver Road • 'Ewa Beach, HI 96706

T 808.589.1829 • F 808.589.2610

info@halekipa.org • www.halekipa.org



Aloha United Way
Kauai United Way
Hawaii Island United Way



Ka'i Like Program



HALE KIPA

Inspiring Lives - One Youth At A Time

Ka'i Like Program

Hale Kipa's Ka'i Like Program works collaboratively with Family Court to provide opportunities and support so youth involved in the juvenile justice system may succeed in the following areas:

- Be accountable for behaviors
- Comply with terms and conditions of probation
- Remain arrest-free
- Develop new competencies
- Achieve educational / vocational goals
- Link to positive community resources

Population and Eligibility Criteria

Youth who have been either:

- Arrested
- Petitioned
- Detained
- On protective supervision
- On supervised release
- On probation

Youth and Family Responsibilities

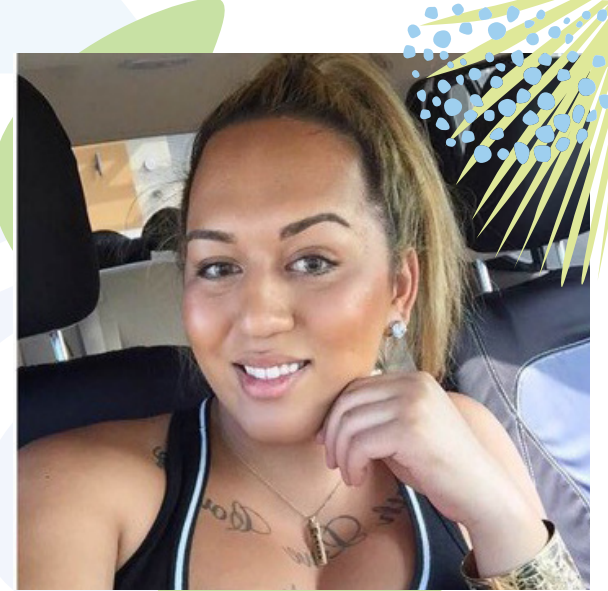
- Participation in the development of an individualized implementation plan
- Participation in program activities, at a specific number of hours per week
- Attend school or maintain another appropriate educational or vocational plan
- Comply with Probation Rules / Conditions

Services

- Assessments
- Individualized Implementation Plan development
- Individualized support / supervision
- Case management
- Family Support
- Advocacy and referrals
- Resource Development
- Education support
- Linkages and Collaboration with other
- Community Resources
- Transportation
- Activities (recreational, skill building, cultural, tutoring, etc.)
- 24-hour staff – Accessibility / Crisis / Emergency Interventions

Contact Information

O'ahu – 808.589.1829 Ext. 200
Hawai'i – 808.969.1935



“Hale Kipa provided a helping hand when no one else had. “Without them, I'd probably be in jail.”

Makana



Pages 1 and 2 of this PDF can be printed on both sides of one 8-1/2" x 11" sheet of paper and folded into thirds to form a brochure.