

RESIDENTIAL SERVICES

Pu'uhoonua (Emergency Shelters) Kamala Homes

O'ahu - 808.754.9844

Hale Hōkūle'a Hale Huli'au (Transitional Living Program)

O'ahu - 808.589.1829 Ext. 134

Kauhale 'Ōpio

O'ahu - 808.589.1829 Ext. 299

PREVENTION & OUTREACH SERVICES

Community-Based Outreach & Advocacy Programs

O'ahu & Kaua'i - 808.589.1829 Ext. 200

Guide On The Side

O'ahu - 808.265.0635

Independent / Interdependent Living Programs / Higher Education / Imua Kākou ('IH)

Step-Up Housing & Foster Youth to Independence

O'ahu - 808.589.1829 Ext. 233

Ka'i Like Program

O'ahu - 808.589.1829 Ext. 200 • Hawai'i - 808.969.1935

Kalihi Juvenile Assessment Center

O'ahu - 808.336.1573

Safe Place

O'ahu - 808.999.SAFE (7233) • Hawai'i - 808.959.5855

Transition & Aftercare Support Services

O'ahu & Kaua'i - 808.589.1829 Ext. 200

Hawai'i & Maui - 808.969.1935

Wraparound Services

O'ahu - 808.589.1829 Ext. 200 • Hawai'i - 808.854.9032

Youth Outreach (YO!)

O'ahu - 808.942.5858

CLINICAL SERVICES

Expanded Crisis Support

O'ahu - 808.589.1829 Ext. 400 • Hawai'i - 808.969.1935

Hale Ho'opakele

O'ahu - 808.589.1829 Ext. 111

Intensive In-Home Services / Intensive Independent Living Skills

O'ahu - 808.589.1829 Ext. 400

Kaua'i - 808.589.1829 Ext. 200 • Hawai'i - 808.969.1935

Trafficking Victim Assistance Program

O'ahu, Kaua'i, Hawai'i Hotline - 1.888.398.1188

Transitional Family Homes

O'ahu - 808.589.1829 Ext. 115

MISSION STATEMENT

Rooted in aloha and kuleana, Hale Kipa is dedicated to supporting and empowering Hawai'i's youth, young adults, and families who are navigating trauma, injustice, and systemic barriers. Through safe and nurturing housing, culturally grounded care, and trauma-informed relationships, we encourage them to discover their passions, embrace their resilience, and thrive as compassionate, responsible leaders in their families and communities.

Hale Kipa is a multi-service, fully accredited 501(c)(3) nonprofit agency that specializes in working with youth and their families who often have nowhere else to turn. Hale Kipa has served more than 74,000 youth throughout Hawai'i since its beginning in 1970 as a single shelter on O'ahu.

This includes working in partnership with public agencies and private organizations to provide residential, outreach, and foster care services at no cost. With programs that are flexible and responsive to changing needs, Hale Kipa supports youth involved in juvenile justice, behavioral health, education and child welfare. Program goals include stabilizing young people in crisis and helping youth and families build resiliency to experience success in their lives. Services are flexible, free, creative, and determined by the youth's and family's needs.

All persons are treated equitably and without favoritism, subject to limitations imposed by contractual obligations.



HALE KIPA

91-2128 Old Fort Weaver Road • 'Ewa Beach, HI 96706

T 808.589.1829 • F 808.589.2610

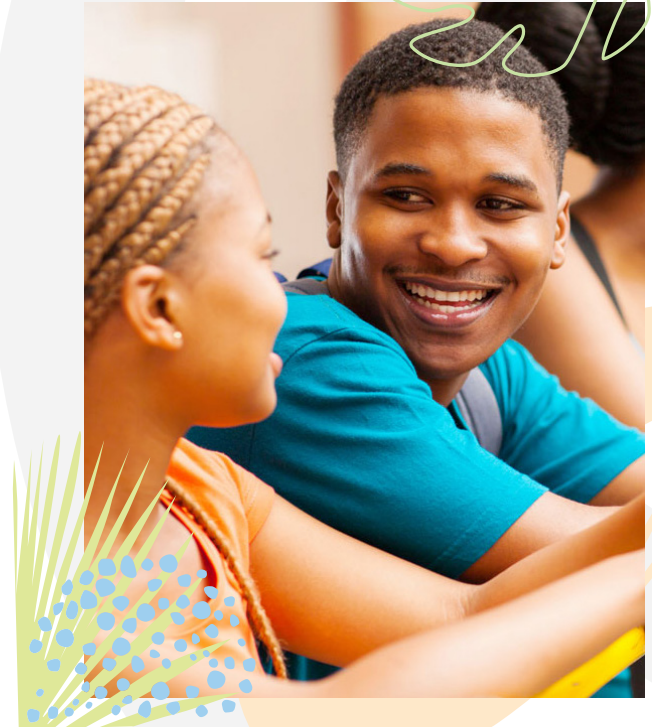
info@halekipa.org • www.halekipa.org



Aloha United Way
Kauai United Way
Hawaii Island United Way



Intensive In-Home Services



HALE KIPA

Empowering Lives - One Youth At A Time

Intensive In-Home Services (IIH)

Hale Kipa's Intensive In-Home Services provides comprehensive, behavioral, community-based services for children and families known to the Child & Adolescent Mental Health Division (CAMHD) State of Hawaii, Department of Health.

The services are based on an intensive, individualized, strengths-based, trauma-informed care approach that focuses on the youth and family's needs and goals.

A dedicated, geographically-based team of mental health professionals and trained therapeutic paraprofessional staff are assigned to assist and support youth and their families to meet the identified goals of their Coordinated Service Plan (CSP) and reduce the need for unnecessary out-of-home therapeutic placements. Services are designed to be both culturally sensitive and developmentally fitting to the strengths and needs of youth and families.

Population and Eligibility Criteria

- Youth ages 3 through 20 years of age and their families
- Can serve CAMHD youth in residential care as part of a transition plan

Admission Criteria

- Referred by CAMHD Family Guidance Centers

Youth and Family Responsibilities

- Participation in the development of an individualized Mental Health Treatment Plan with personal goals
- Participation in individualized therapeutic program activities

Services

- Individual and family therapy and support towards independence
- Flexibility to meet with youth and families in a variety of home and community locations
- Intensity and frequency of service provision is based on identified needs and goals of youth / family
- Assist families in identifying and securing other services and resources as needed
- Strength-based assessments
- Mental Health Treatment Plans are developed based on the strengths and goals of the individual and family
- Assist families and youth to obtain relevant skills which leads toward transition to adulthood
- Family / team support meetings
- Linkages and collaboration with other community resources
- 24-hour staff accessibility / crisis planning and interventions

Contact Information

O'ahu & Kaua'i – 808.589.1829 Ext. 200
Hawai'i – 808.969.1935



*“Without Hale Kipa I
wouldn't have my son back
as a successful and happy
young man.”*

Hong Chen, Ph.D.

