

## RESIDENTIAL SERVICES

### Pu'uohonua (Emergency Shelters) Kamala Homes

O'ahu - 808.754.9844

### Hale Hōkūle'a Hale Huli'au (Transitional Living Program)

O'ahu - 808.589.1829 Ext. 134

### Kauhale 'Ōpio

O'ahu - 808.589.1829 Ext. 299

## PREVENTION & OUTREACH SERVICES

### Guide On The Side

O'ahu - 808.265.0635

### Independent / Interdependent Living Programs / Higher Education / Imua Kākou ('IHI)

### Step-Up Housing & Foster Youth to Independence

O'ahu - 808.589.1829 Ext. 233

### Ka'i Like Program

O'ahu - 808.589.1829 Ext. 200 • Hawai'i - 808.969.1935

### Kalihi Juvenile Assessment Center

O'ahu - 808.336.1573

### Safe Place

O'ahu - 808.999.SAFE (7233) • Hawai'i - 808.959.5855

### Transition & Aftercare Support Services

O'ahu & Kaua'i - 808.589.1829 Ext. 200

Hawai'i & Maui - 808.969.1935

### Wraparound Services

O'ahu - 808.589.1829 Ext. 200 • Hawai'i - 808.854.9032

### Youth Outreach

O'ahu - 808.457.9907

## CLINICAL SERVICES

### Expanded Crisis Support

O'ahu - 808.589.1829 Ext. 400 • Hawai'i - 808.969.1935

### Hale Ho'opakele

O'ahu - 808.589.1829 Ext. 111

### Intensive In-Home Services / Intensive Independent Living Skills

O'ahu - 808.589.1829 Ext. 400

Kaua'i - 808.589.1829 Ext. 200 • Hawai'i - 808.969.1935

### Trafficking Victim Assistance Program

O'ahu, Kaua'i, Hawai'i Hotline - 1.888.398.1188

### Transitional Family Homes

O'ahu - 808.589.1829 Ext. 115

## MISSION STATEMENT

*Rooted in aloha and kuleana, Hale Kipa is dedicated to supporting and empowering Hawai'i's youth, young adults, and families who are navigating trauma, injustice, and systemic barriers. Through safe and nurturing housing, culturally grounded care, and trauma-informed relationships, we encourage them to discover their passions, embrace their resilience, and thrive as compassionate, responsible leaders in their families and communities.*

Hale Kipa is a multi-service, fully accredited 501(c)(3) nonprofit agency that specializes in working with youth and their families who often have nowhere else to turn. Hale Kipa has served more than 74,000 youth throughout Hawai'i since its beginning in 1970 as a single shelter on O'ahu.

This includes working in partnership with public agencies and private organizations to provide residential, outreach, and foster care services at no cost. With programs that are flexible and responsive to changing needs, Hale Kipa supports youth involved in juvenile justice, behavioral health, education and child welfare. Program goals include stabilizing young people in crisis and helping youth and families build resiliency to experience success in their lives. Services are flexible, free, creative, and determined by the youth's and family's needs.

All persons are treated equitably and without favoritism, subject to limitations imposed by contractual obligations.

# Hale Ho'opakele



## HALE KIPA

91-2128 Old Fort Weaver Road • 'Ewa Beach, HI 96706

T 808.589.1829 • F 808.589.2610

info@halekipa.org • www.halekipa.org



Aloha United Way  
Kauai United Way  
Hawaii Island United Way



## HALE KIPA

Empowering Lives - One Youth At A Time

## Hale Ho'opakele

Our center is open to youth who are victims / survivors of commercial sexual exploitation and sex trafficking.

Our voluntary program accepts self referrals as well as referrals from Child Protective Services, Judiciary, Office of Youth Services, and parents.

Self and parent referred residents will be expected to participate in family support services targeted towards reunification or other alternative arrangements. Youth and families are provided referrals to needed community services.

## Population and Eligibility Criteria

- Youth is suspected/confirmed of being sexually exploited / trafficked
- Youth in need of temporary placement, respite, or short-term homelike setting
- Immediate health screening / program placement clearance completed
- Youth (and family) willing to engage with trauma informed services

## Youth Contributions

- Value and respect people, property, and other commitments
- Engage in program activities, support services, and community offerings
- Prioritize program agreements and responsibilities
- Attend an educational, healing, mental health, and / or recreational program

## Services

- 24-hour nurturing, safe, trauma responsive emergency placement
- Basic needs provision, stabilization services, trauma informed relationship building
- Strength-based individual, group, and family support services
- Community connections, social and emotional learning, other skills building
- Collaborative responses with external CSEC and HT multi-disciplinary teams

## Partners

- Department of Human Services
- Child Welfare Services
- Hawaii Youth Correctional Facility
- Kawaihoa Youth and Family Wellness Center
- Office of Youth Services
- Parents And Children Together (P.A.C.T.)
- Susannah Wesley Community Center

## Contact Information

O'ahu – 808.589.1829 Ext. 111



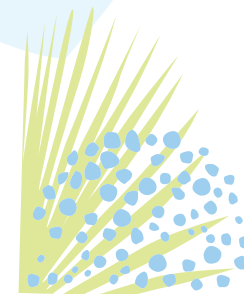
*“We visited our daughter, she seemed comfortable and her color looks good.”*

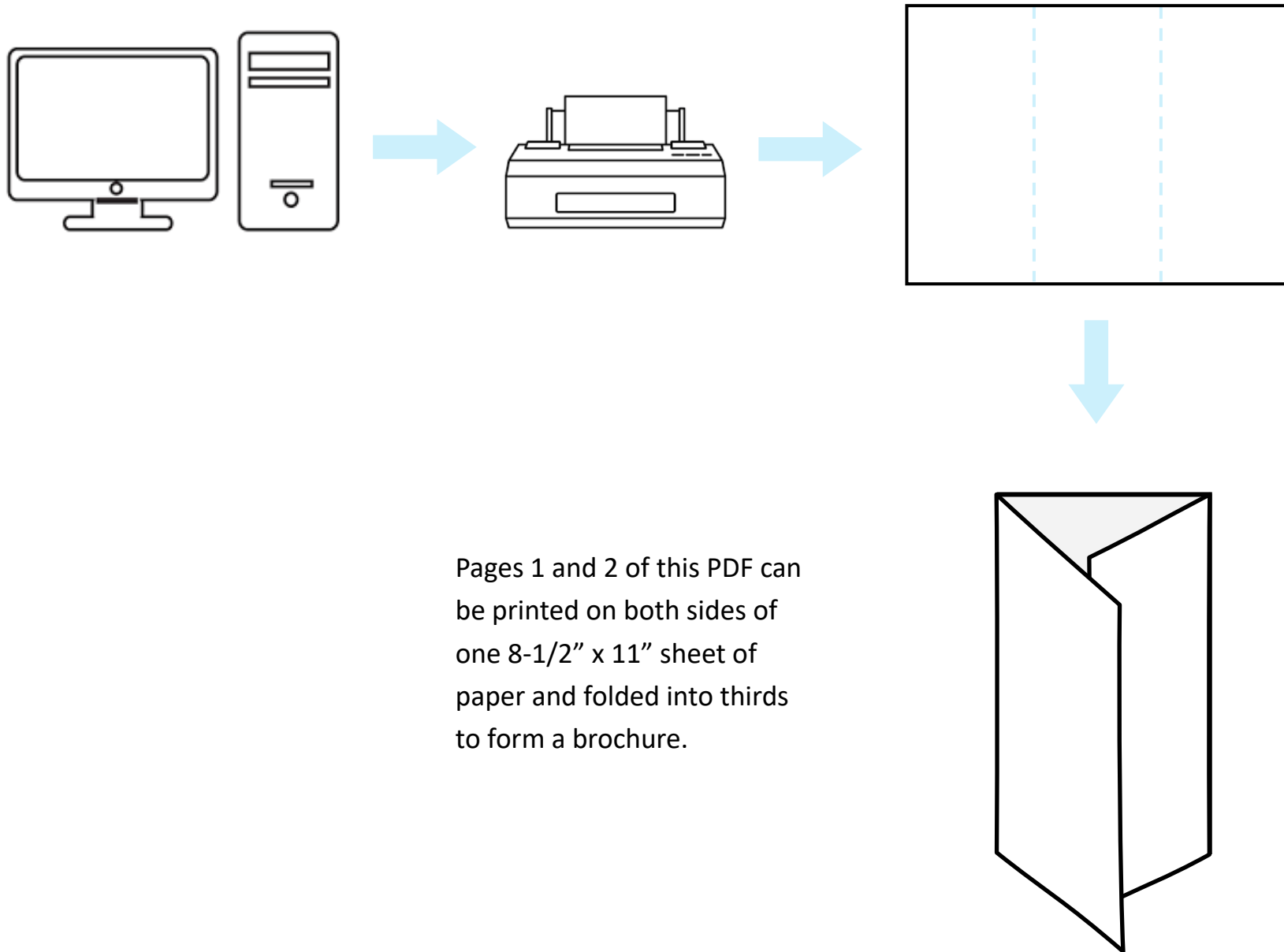
*I hope she continues to strive, to become a responsible individual.*

*This is a safe haven, to grow and heal. This is an answered prayer.*

*Thank you Hale Kipa for helping children in need.”*

*Mahalo again,  
Deborah*





Pages 1 and 2 of this PDF can be printed on both sides of one 8-1/2" x 11" sheet of paper and folded into thirds to form a brochure.